



Product description:

This coating is based on acrylic emulsion polymer with the ability to dry fast without any odor and resistant to washing.

Application:

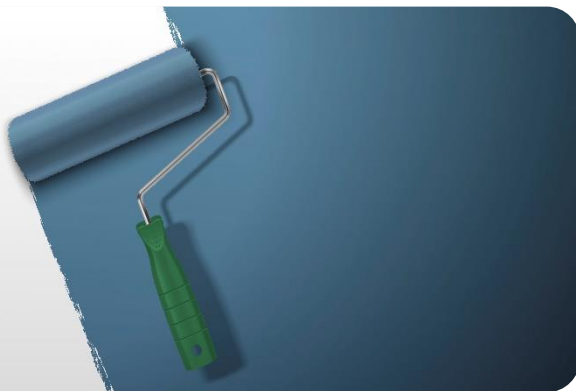
This product can be used for indoor painting on gypsum, cement and wooden surfaces and ceiling.

Technical data:

Specification	Details	EN Standard	ASTM Standard
Appearance	Matte	EN ISO 7724	D2244
Glossy (under angle 85)	Max 10	EN ISO 13300	D523
Shades(color)	White and colorful	EN ISO 7724	D2244
Solid by weight %	1.2 - 4.8 g/cm3	EN ISO 3251	D2369
Solid by volume %	55 ± 2	EN ISO 3233	D2697
Density g/cm ³	1.4 - 1.6 g/cm3:	EN ISO 2811	D1475
Hardening mechanism:	Evaporation of water	-	-
Viscosity	80 - 135 Krebs	EN ISO 2431	D1200
Theoretical coverage	3 - 4 m ² /l	EN ISO 6504-1	D344
Surface Drying	Max 1 hour	EN ISO 9117	D1640
Through Dry(Deep Drying)	Max 3 hour	EN ISO 9117-1	D1640

Environmental Conditions:

This product can be run at 5 - 35°C on dry place.



ACRYLIC PAINT – PLASTIC COATING (ACE-420)

Surface Preparation:

The surface should be clean, dry and free from any contamination. Fresh gypsum surfaces usually do not require preparation, but old and old surfaces should be primed.

Method of Applying:

- You can hit the surface if needed.
- Then the item product Dilute the solution with suitable thinner and apply with suitable equipment be made.

Equipment Used: Spray, brush, roller

Safety Tips:

This product is water-based and not flammable. However, it is recommended that in case of contact with the skin, wash it with soap and large amounts of water, and in case of further skin sensitivity and irritation, see a doctor.

Storage Conditions:

This product should be in a closed space and away from direct rays .The temperature should be kept at 5 - 35 degrees Celsius.

packing:

- Gallon (Plastic can)
- 2.5 Gall (Plastic can)
- 5 Galon (Plastic can)

Considerations:

The available information is based on our technical knowledge and laboratory research, but since the conditions and methods of application are different and out of reach, we do not guarantee the results of it.

LEGAL NOTES : The information contained in this Technical Data Sheet is based on laboratory testing and practical experience. Actual performance may vary depending on substrate condition, application method, and environmental conditions. Users should test suitability before large-scale application.

Head Office : Building No.15 , Qasimlu Street 40, Shahidan Zargata Quarter 24, Zone 1, Sulaymaniyah 46001, Iraq

Factory : Tanjaro Industrial Area – Sulaymaniyah – Iraq