



ALKYD PAINTS- SEMI GLASS FINAL ALKYD INDUSTRIAL (F9315)

Product description:

F9315 is a single-component coating based on modified alkyd resin. This is not recommended for submerged systems and alkaline conditions.

Application:

This coating (in an alkyd system) is used for external and internal surfaces of structures that are under semi-critical industrial conditions. This coating is not recommended for use on epoxy and polyurethane coatings and zinc primers due to reduction of adhesion.

Technical data:

Specification	Details	EN Standard	ASTM Standard
Color / Shade	White and Colored	EN ISO 11664	EN ISO 11664
Solids by Volume %	54 ± 4	EN ISO 3233-1 / 3233-2	D2697
Solids by Weight %	70 ± 4	EN ISO 3251	D2369
Density g/cm ³	1.3 - 1.6 kg/lit	EN ISO 2811	D1475
Shelf life	12 months		
Dry Film Thickness (DFT) μm	50 - 60 μ	EN ISO 2808	D7091
Wet Film Thickness (WFT) μm	100 - 120 μ	EN ISO 2808	D4414
Coverage (Spreading rate) m ² /L	8 - 10 m ² /lit	EN ISO 6504	Calculated

The drying time depends on the film thickness applied, all the data in this catalog are based on the thickness of the dry film in vitro conditions.

Temperature C° °F	Surface drying time (Clock)	Full Cure
59 (15)	8-9	Minimum 9
77 (25)	5-6	7
104 (40)	4-5	6

Equipment Used:

- Airless spray
- NOZZLE DIAMETER: 0.017-0.021 INCH
- EXHAUST PRESSURE: Minimum 141 TIMES
- AIR SPRAY
- NOZZLE DIAMETER: 1.2 -1.8 MM
- NOZZLE PRESSURE: 2- 3 TIMES BRUSHES: 20-30 (FOR SPOTTING)
ROLLER : 20-30 (FOR SPOTTING)

Storage Conditions:

This product should be stored in a closed space away from direct rays at a temperature of 5-35 degrees.

Environmental Conditions:

The surface temperature should be at least 3°C above the dew point. In hot climates, the temperature of the material must be 20-25 before mixing, otherwise pot life will be very short. To ensure the coating hardening, the air temperature and surface should be above 10°C. This coating should not be applied in areas that have been overturned or wind speeds exceeding 7 mis.

Surface Preparation:

The surface should be clean, dry and free of any contamination and be prepared in accordance with ISO 8504:1992.

2-While observing the intervals of the underlying cover, the broken and damaged parts should be prepared according to the standard Sa 21/2 (ISO 8501-1:1988) and the surface of the primer should be repaired before the F315 coating.

Method of Applying:

- All equipment should be cleaned with the recommended thinner before use. 2-: This coating is mixed with a strong mixer. 3-For air spray 5% thinner and 3-5% thinner is recommended for spray without air.
- Each painting pulse should be applied in parallel, so that the pulse covers 50% of the painted surface at the right angle.
- To ensure the thickness of the angles, sharp edges, rivets, rugged parts be covered again.
- If the cycle exceeds the minimum interval time of this coating, the surface hardness for adhesion of the later layers should be considered.

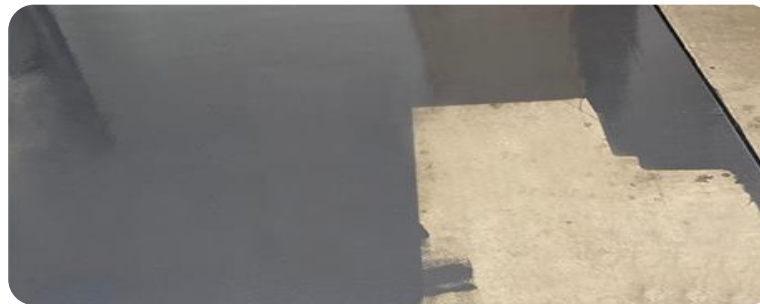
Note: Before applying the cycle, if the surface has been exposed to polluted environment, it should be cleaned with high pressure of wind or water flow and the surface should be completely dry.

Wash the equipment immediately after use.

Safety Tips:

This coating is flammable and should be kept away from flame and heat, and the executor is also obliged to study and observe the MSDS conditions of this product, to wear special masks and safety gloves when using and in environments with proper ventilation.

Considerations: The drying time depends on the film thickness applied, all the data in this catalog are based on the thickness of the dry film in vitro condition.



LEGAL NOTES : The information contained in this Technical Data Sheet is based on laboratory testing and practical experience. Actual performance may vary depending on substrate condition, application method, and environmental conditions. Users should test suitability before large-scale application.

Head Office : Building No.15 , Qasimlu Street 40, Shahidan Zargata Quarter 24, Zone 1, Sulaymaniyah 46001, Iraq

Factory : Tanjaro Industrial Area – Sulaymaniyah – Iraq