



Performance Enhancing Grinding Aid for Vertical Roller Mills

Description:

SE 3200 is a high-performance chemical formulation specifically designed to enhance cement grinding efficiency in vertical mills and to increase both early and finally strength. It ensures uniform particle grinding, reduces energy consumption, and promotes the development of cement strength.

Technical Properties:

Chemical Base	Amine
Appearance	Homogeneous Liquid
Color	Light Yellow
pH	10 ±1
Density (g/cm³)	1,08 ± 0,02
Chloride content	< 0,01

Application :

SE 3200 should be directly added to the mill or conveyor belt during the grinding process using an adjustable dosing pump.

Advantage :

- Increases mill throughput and reduces energy consumption per ton.
- Improves grinding stability by reducing vibration and pressure fluctuations.
- Optimizes material bed formation and enhances drying and classification behavior
- Facilitates better control of fineness (Blaine) and residue on sieve.
- Enhances separator efficiency and ensures consistent product gradation.
- Enhances early and final compressive strength.
- Reducing the CO₂ emission as a result of reducing energy consumption for the grinding process.

Fire : SE 3200 non-flammable.

Packaging : 1000 kg IBC konteyner Bulk

Health and Safety Information:

The additive must be kept away from the skin and eyes. In case of any contact, it must be washed with water. When contacted with eyes one must immediately rinse it with water and medical support must be taken. Protective goggles / gloves / mask should be used during the usage of the additive. The Safety Data Sheet (SDS) should be read for detailed information.

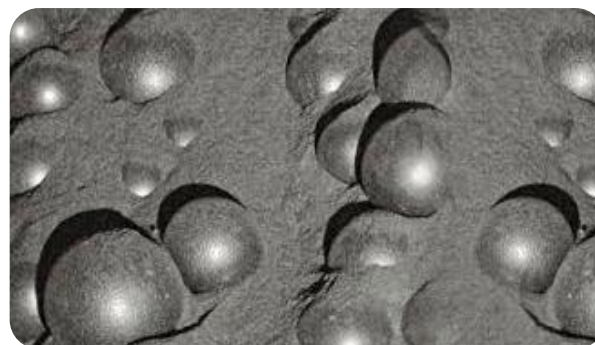
Dosage:

Recommended dosage range: 0.03% – 0.05% by weight of cement (300–500 g/ton).

The optimal dosage should be determined through laboratory and industrial mill trials, based on clinker properties, mill settings, and target fineness.

Storage:

Must be stored at temperatures between +5°C and +35°C. Direct sunlight exposure and freezing conditions should be avoided. Once frozen, the product should be thawed out slowly and re-mixed thoroughly prior to use. Under proper storing conditions, the product's shelf life is 12 months from production date if keep in original packaging unopened and undamaged.



Standards compliance:

Complies with ASTM C465.

Cleaning :

In case of a possible spill or contamination, it can be washed with clean cold water.

